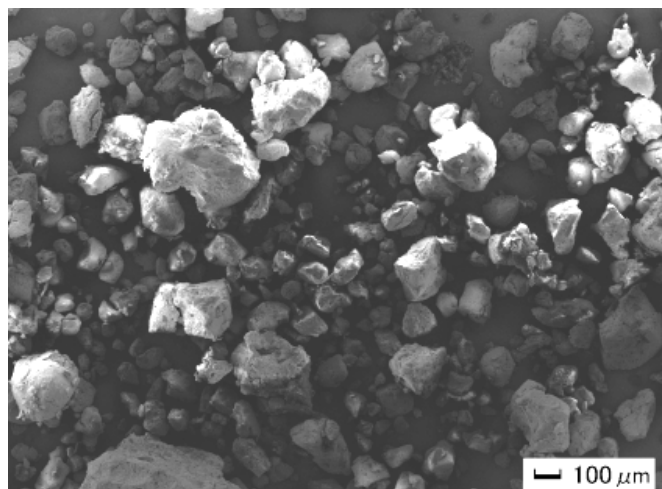
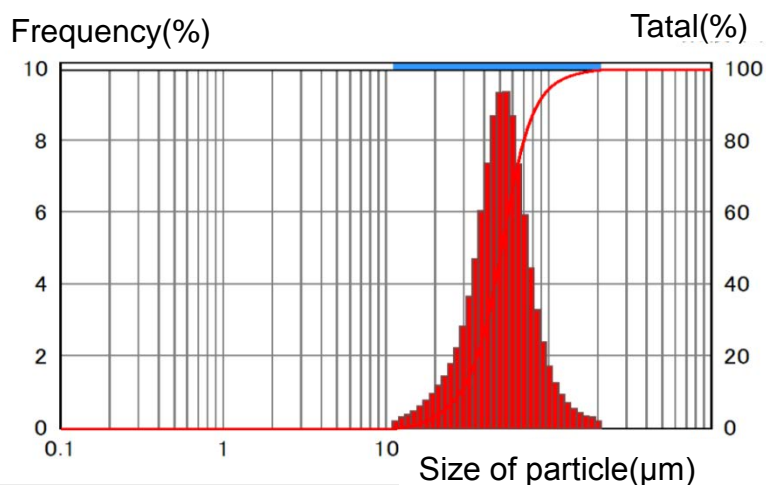


【SEM image】



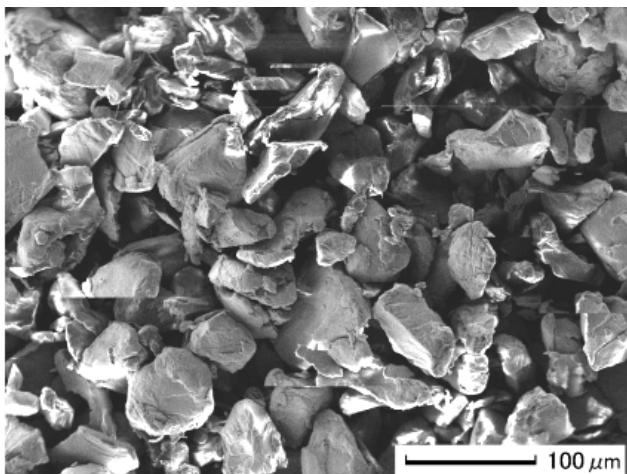
【Particle size distribution】



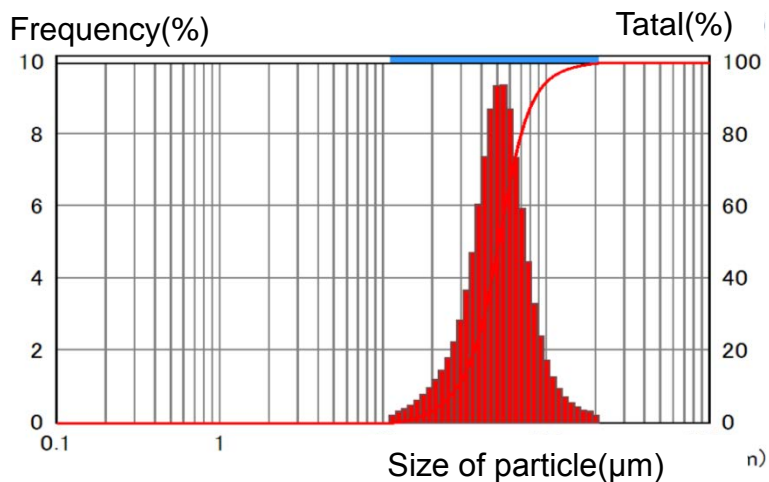
Material	Polyphenylene Sulfide resin
Average of particle size (μm)	1.5 – 100 ※
Form of sample	Powder
Specific gravity	1.34
Glass reduction Temp. (°C)	85
Recrystallization Temp. (°C)	196
Melting point (°C)	285
Thermal reduction Temp. (°C)	480
Refractive index	1.7

※Average of particle size adjustable to above range.

【SEM image】



【Particle size distribution】



Material	Polybutylene Terephthalate Resin
Average of particle size (μm)	40 – 100
Form of sample	Powder
Specific gravity	1.34
Glass transition Temp. (°C)	34
Recrystallization Temp. (°C)	188
Melting point (°C)	224